



Football stadium

Government office



Airport



Bank



Solar power generation system



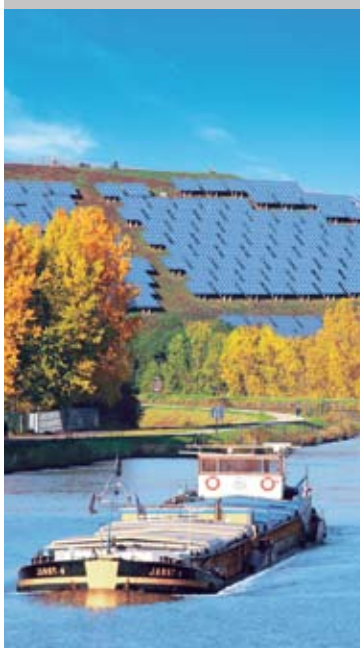
Railway station



Office building



Solar power generation system



Winery



Sharp Kameyama plant



Village without power supply



Government office



Who was the first company to reach 2GW in cumulative solar cell production volume in the world? Sharp was.

Sharp has been working on solar cell R&D since 1959. We have installed solar-power systems in lighthouses, satellites in space, airports, football stadiums, and even remote Mongolian villages lacking electricity. Our many years of experience have resulted in highly reliable and widely applied solar-cell technology. Sharp was the

first company to reach 2GW in cumulative solar cell production volume in the world. 2GW is equivalent to a quarter of all solar power systems worldwide.* With our pioneering spirit and steadfast devotion, we have pursued our objective to popularize the use of solar cells around the world.

To protect our wonderful planet, Sharp is using almost half a century's experience and reliability to broaden the applications for solar technology, to help form a low-carbon society and bring a new energy to your life.

* Calculated by Sharp based on IEA PVPS 2007